

## Does the tip-cap upset the current teaching of prehistory research?

### [1. Partial reliefs from family representations](#)

### [2. Cap representation made of stone contours](#)

### [3. Manufacture and display of a tip-cap](#)

## Introduction

Prehistoric human beings had to be the first to find a method for all objects of need in the development of mankind. They started naturally with the simplest. If a child's headgear could be demonstrated on testimonies of the early days of mankind, it would have to have the character of simplicity.

As a headgear for their children, they created the tip-cap, according to the author.

He proves this by the partial relief “child” from sculptures with family representations (father, mother, child) on finds of the early Paleolites. The depiction of the entire sculptures would have taken up too much space here and can be viewed partly on the [website of the Foundation](#). The [MG907](#) find, which was presented as the first, exemplifies the entire family.

Sculptures from the Paleolites are not (yet) recognized by scientific archaeology.

The simple method of production and representation by the sculpture stones, which are all in the possession of the Foundation, give a wink that science may have to reconsider and revise its view on this point.



Source: [www.pflanzen.de](http://www.pflanzen.de)

As the previous picture shows, tip-hats are easy to craft. Here they decorate the seed shells of the red beech as a handicraft proposal for children of the customers of the company of Andreas Regner, ecological horticultural landscape in Kiel, Germany.

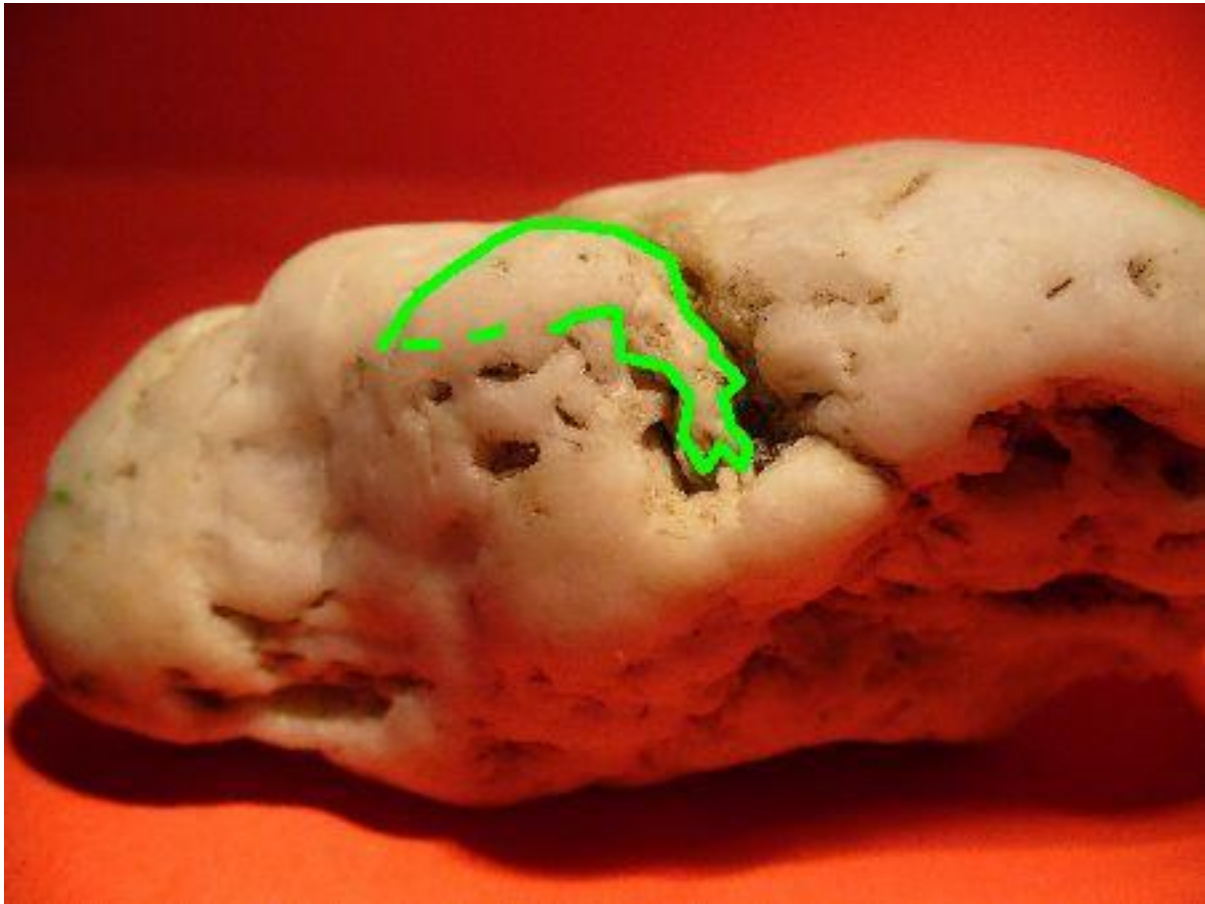
### **1. Partial reliefs from family representations**

The faces are only hinted at. One is reminded of the (German) rhyme verse „Punkt - Punkt - Komma - Strich --- fertig ist das (Mond)gesicht.“ „Dot - dot - comma - dash --- and the moon face is finished“.

In the following are not explained pictures compared with ones, which are complemented by explanatory drawings concerning the tip-caps.



[MG907](#) without explanatory drawing



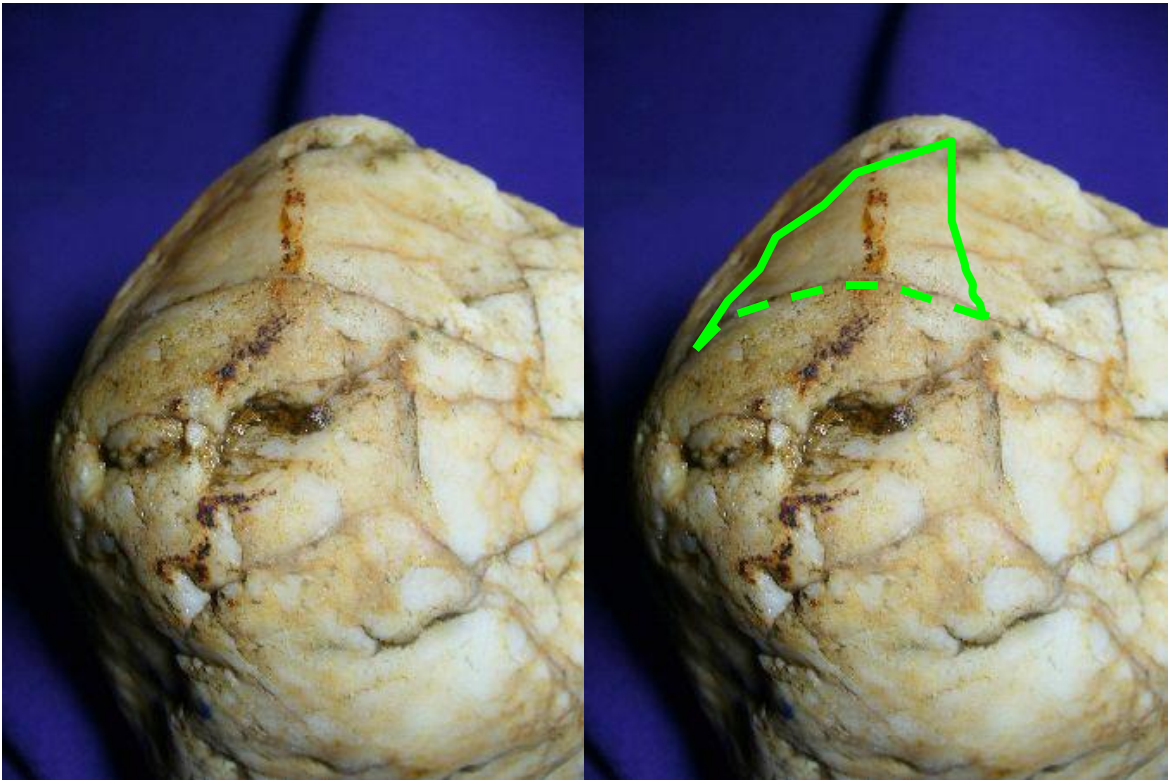
[MG907](#) with redrawn cap



Mother

Father

Using the example of the find [MG907](#), the whole family is shown here. Everything is clearly displayed with the simplest editing.



M918 without

with a redrawn cap

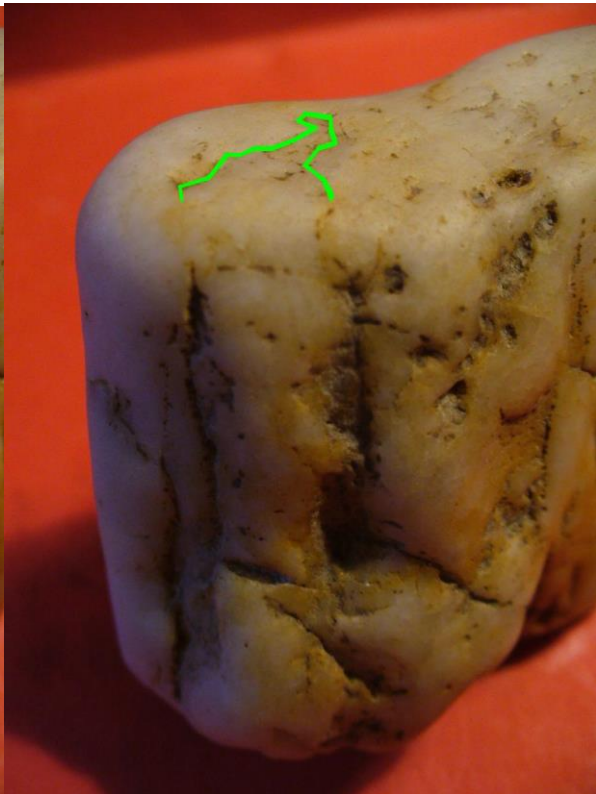


W924 without

with a redrawn cap



V922 without



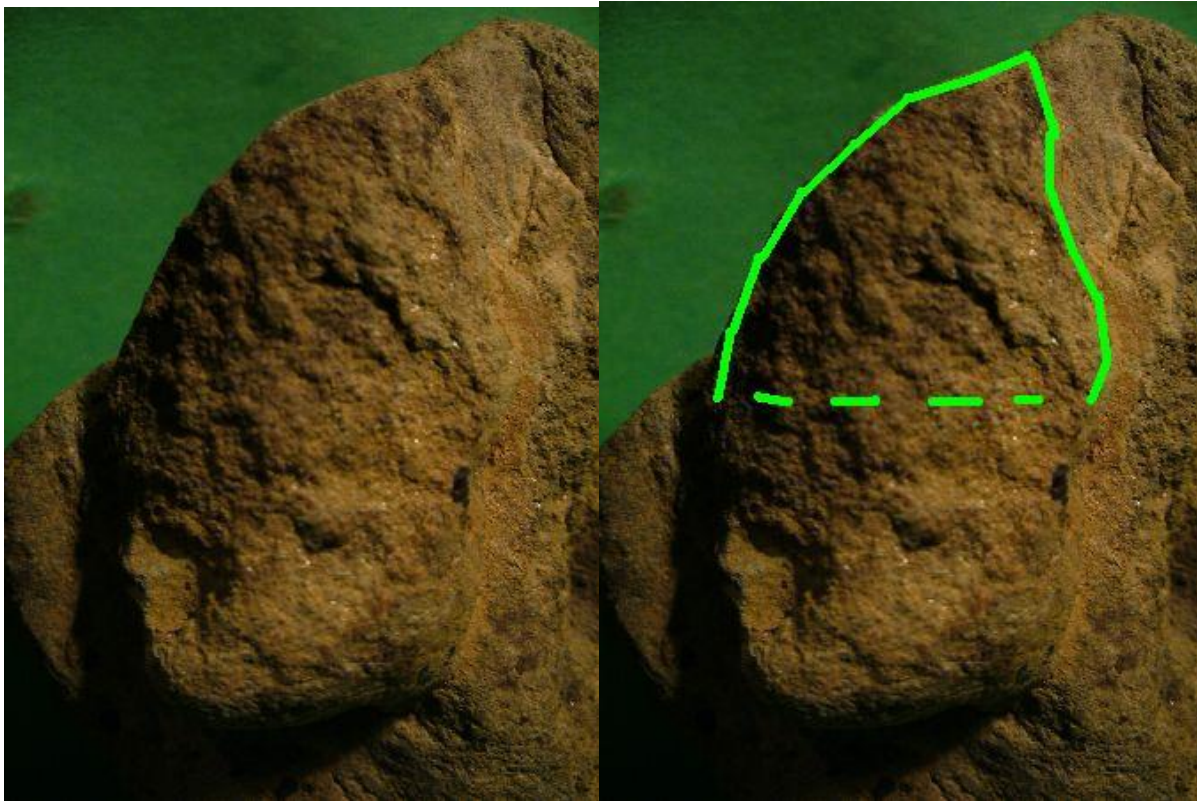
with a redrawn cap



M907 without



with a redrawn cap



W944S without

with a redrawn cap

On this heavily weathered fine sandstone, however, the child's face can still be seen.

## **2. Caps representation by stone contours**

Sculptures follow, where the contours of the stone figure behind the face represent the cap.

With the exception of the first find W938S, all figure stones contain not only the child representation but also those of father and mother.



W938S without explanatory drawing



W938S with redrawn cap



GUES901 without explanatory drawing



GUES901 with redrawn cap





W934S without explanatory drawing



W934S with redrawn cap



Child

Boy

Figures with cap from the possession of Mr. Jan van Es, Roermond, Netherlands.

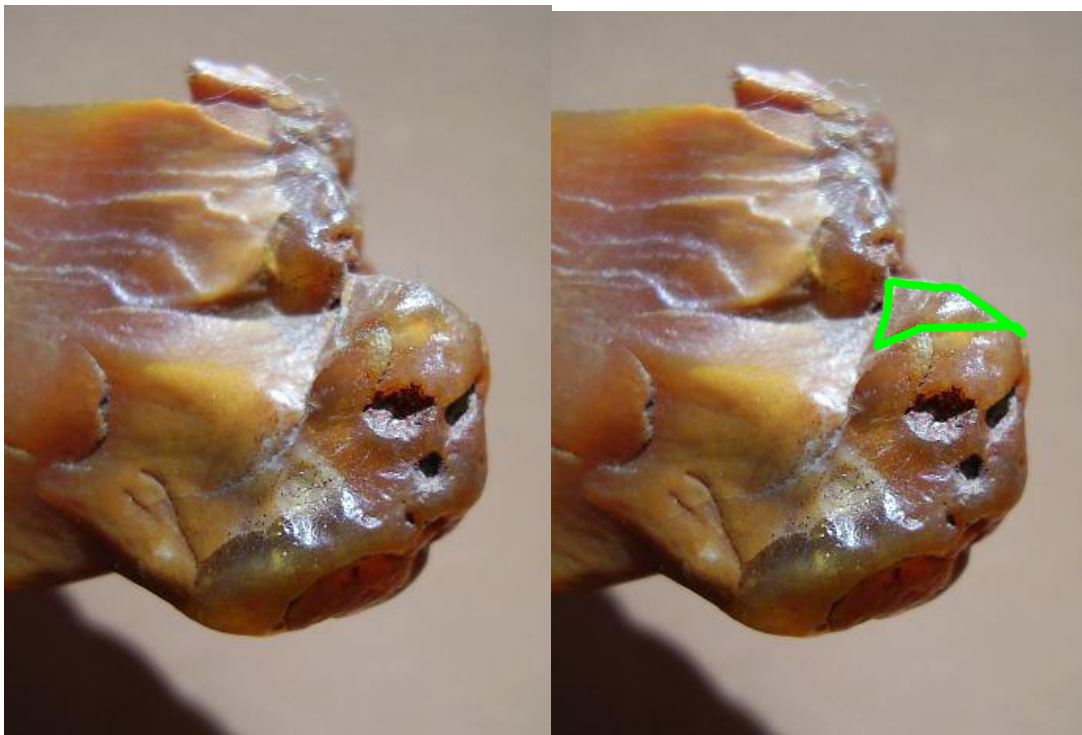


Image of a flying child under horned from the possession of Mr. Jan van Es, Roermond, Netherlands.

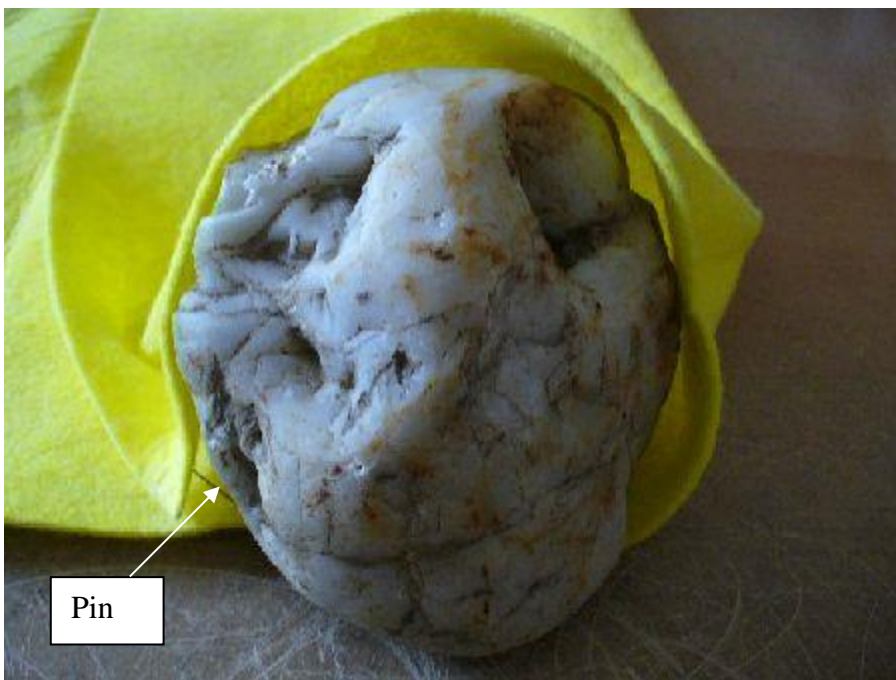
### 3. Manufacture and presentation of a tip-cap

In the following, the production of a tip-cap is shown, whereby tools from the early Paleolites were partly used.



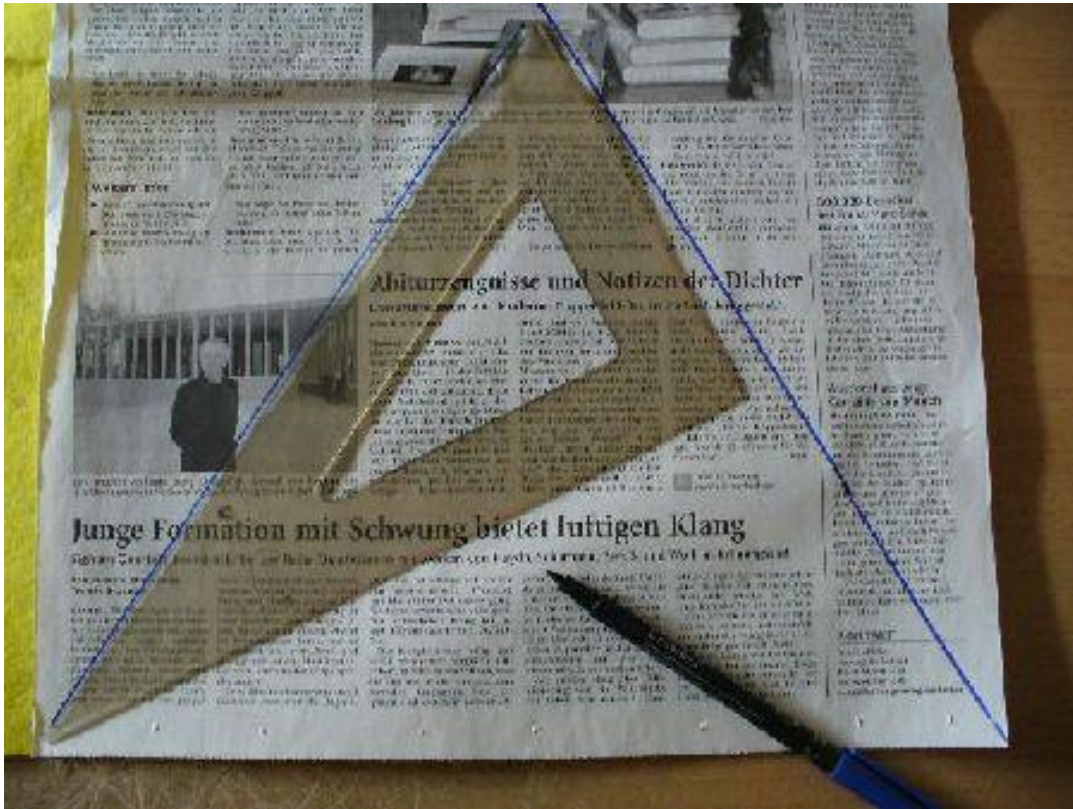
Liza's baby, Fund [V930](#), a hominid representation with a monkey-like mouth.

Liza's baby (Finding [V930](#)) is the model for the tip-hat.  
The mouth of Liza's baby is represented only by a cross.  
The nose is wide and negroid. Her right eye is closed, her left eye is open.



Head ring fixed in fleece cloth by pin

The cap was made from a fleece floor cloth.



Making the pattern



Sewing pattern on fleece cloth



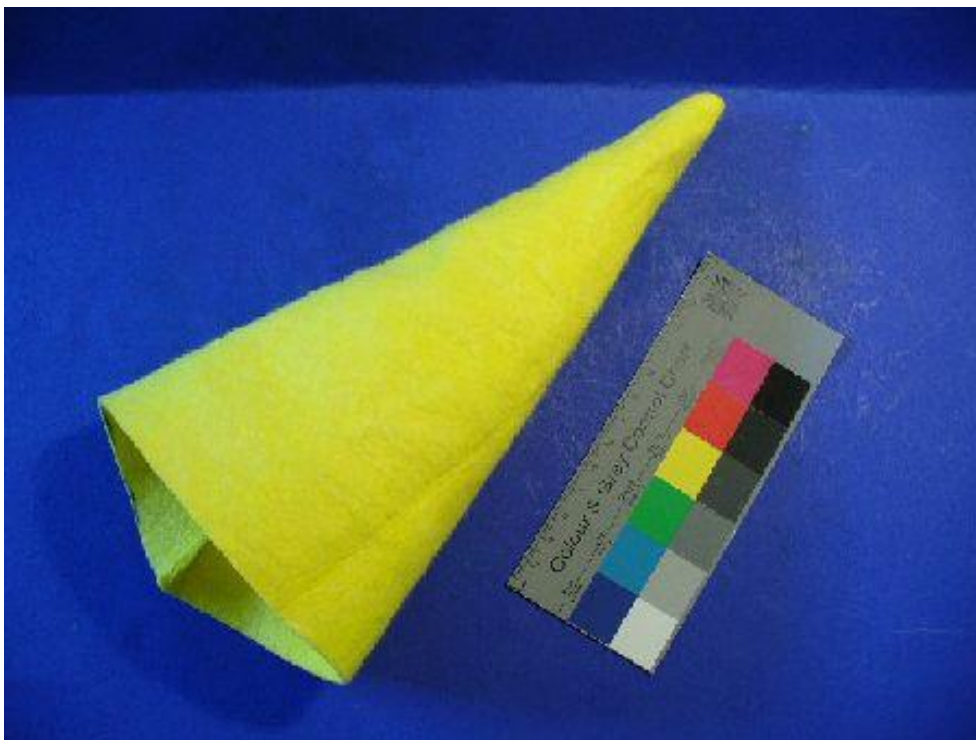
Rounding of the material piece



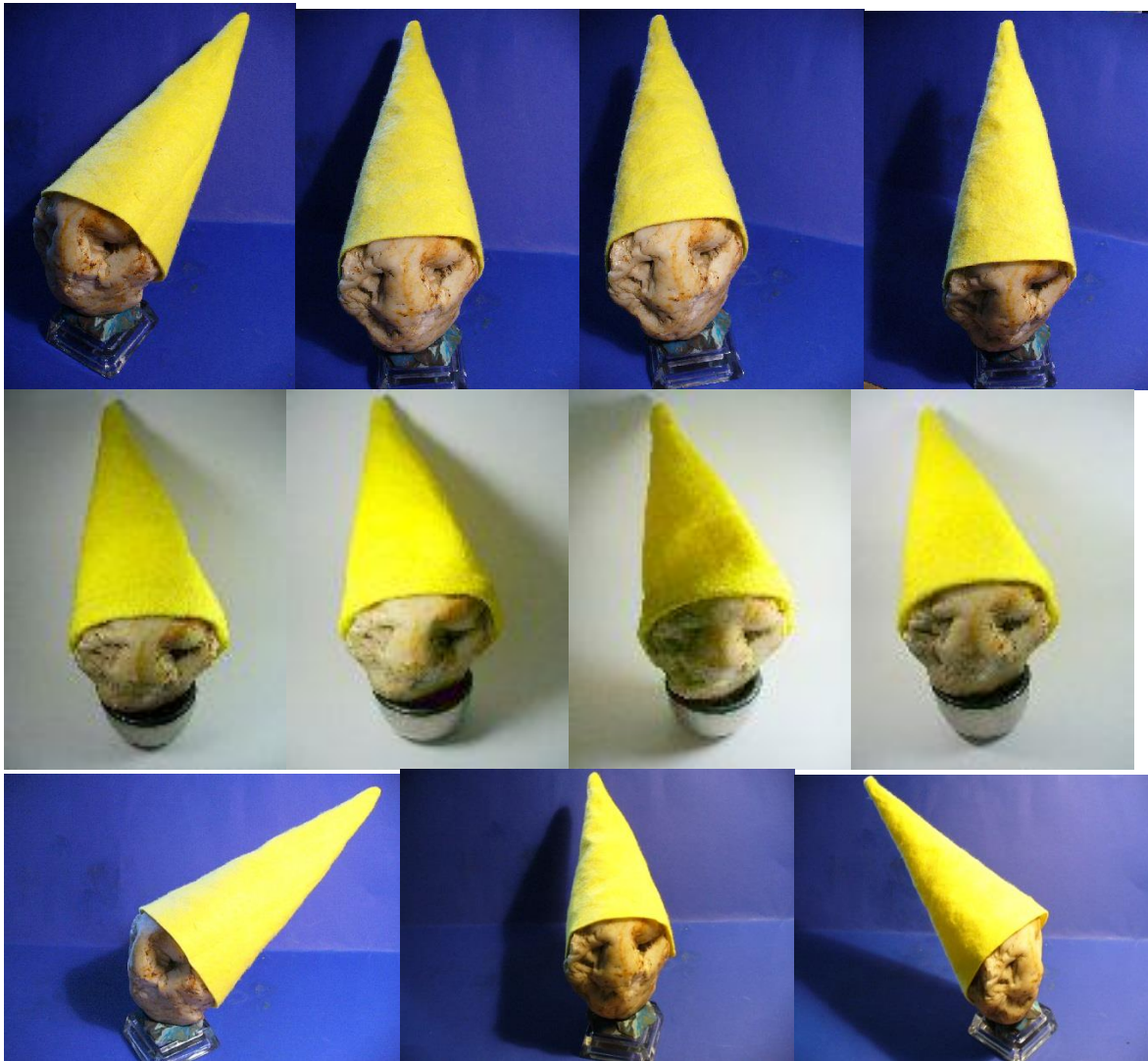
Chopper Toolset\_knife, [V514a](#), an Oldowan-tool, on fleece cloth



Fleece cloth slit by Oldowan knife



Ready-stitched cap with dimension and color scale



Liza's baby with a tip-cap in varying positions and shapes